

Greater Albany Public Schools

2023 Integrated Application Presentation

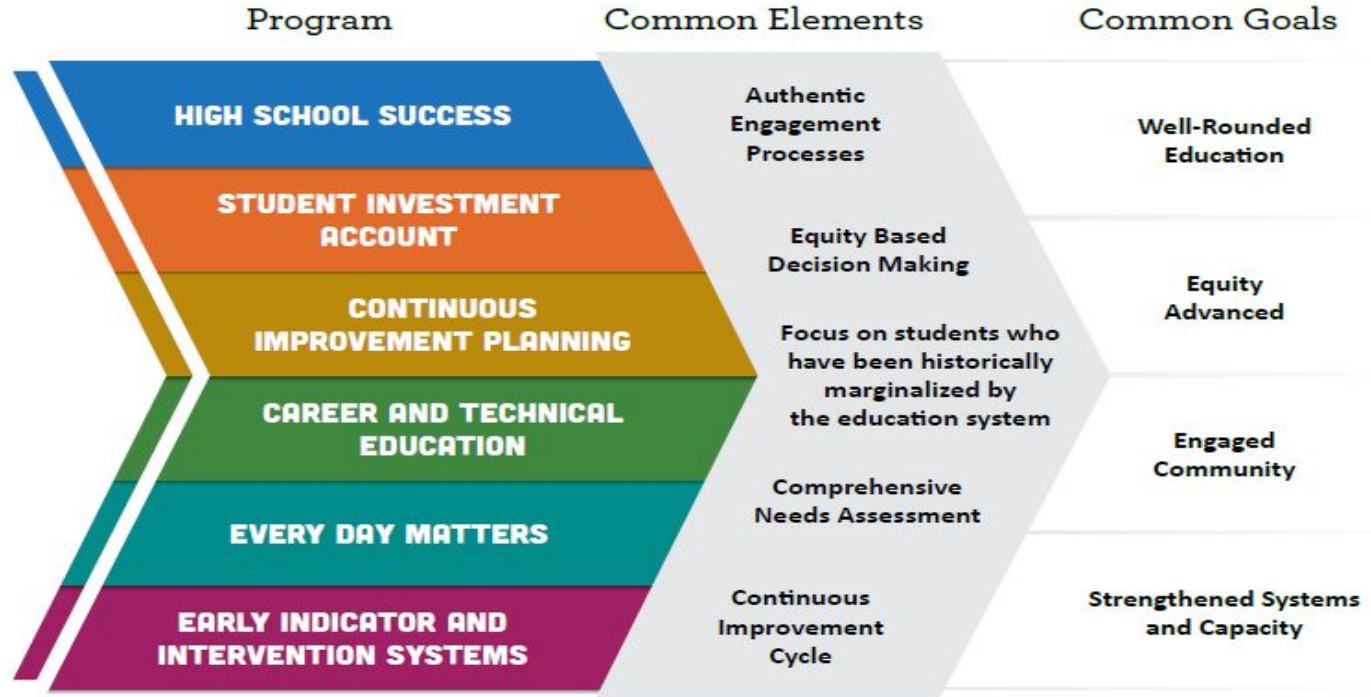
The Integrated Application is About Aligning Programs

- Districts have asked ODE for more streamlined process for applications, reports, etc.
- ODE has been working on melding programs that don't require legislation.
- They identified six programs that had common goals and looked for ways to combine them.

Alignment of Six Programs

1. **High School Success (HSS)**
2. **Student Investment Account (SIA)**
3. Continuous Improvement Planning (CIP)
4. **Career and Technical Education - Perkins V (CTE)**
5. Every Day Matters (EDM)
6. **Early Indicator Intervention Systems (EIS)**

Six Programs & Common Goals

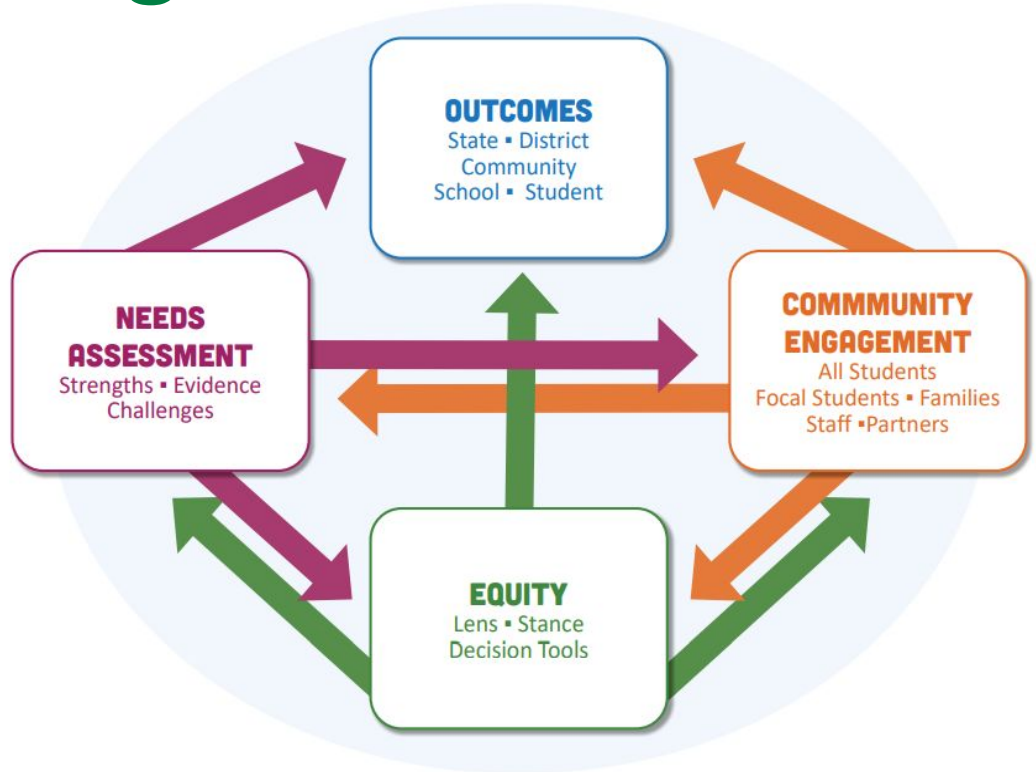


Changes to How Districts Manage the Six Programs

2020-2022	2022 and beyond
Each program had their own applications and deadlines.	One combined application and deadline, March 31.
Multiple Advisory Committees	One Combined Integrated Guidance Team
Community Engagement only required for two grants (SIA and CTE) and conducted separately	Community Engagement is now required for ALL programs as one integrated process
More emphasis on educating parents, staff and community on what the SIA and CTE grants were bringing to districts.	More emphasis on engaging students' voices with a focus on how to address student needs, especially those in <u>focal groups</u> .

Required Planning Processes

- Engage the community
- Consider the needs of ALL students
- Develop a four-year plan with clear Outcomes, Strategies, and Activities



Application Requirements

- Complete the application's five sections with about 40 questions
- In addition to the application, attach:
 - 5 pieces of evidence from Community Engagement efforts
 - Board-adopted Equity lens (our policy JBB Educational Equity)
 - Integrated Planning and Budget Template that shows budget tied to outcomes, strategies and activities
 - URL where application is posted on the applicant's website, and
 - Board meeting minutes showing the Integrated Application was orally presented by an administrator to, and approved by, the governing board.
- Application needs to be submitted by March 31, 2023

Community Engagement Activities

- Grades 3-5 Survey Responses - 1,625 student responses, 318 staff, 384 parent
- Grades 6-8 Survey Responses - 1,280 student responses, 123 staff, 91 parent
- Grades 9-12 Survey Responses - 1074 SAHS student responses (this yr), 773 WAHS student responses (last yr)
- Input from specific parent and community advisory groups

Additional Data

In addition to the Community Engagement, we also reviewed the following data:

- Third grade reading achievement
- K-8 benchmark data for math and reading
- Attendance data K-12
- High school graduation rates, 9th grade on track rates, 5 year complete rates
- SEED Survey Data
- DESSA K-8 Data
- Behavior Data K-12

Needs Assessment Highlights

Strengths:

- 90% of elementary students in grades 3-5 report having friends at school
 - 85% students report adults are kind to students
 - 86% students report they would know what to do if they saw someone being bullied
- 90% of students grades 6-8 report that they have some friends at school
 - 80% of students report that staff treat students respectfully
 - 71% at least one adult at school knows them well

Needs Assessment Highlights

Strengths:

- 73% of WAHS parents report that their child is safe at school
- 4 year graduation rates at both High Schools are back on the rise
- HS Students were surveyed at ALL high schools last year

Needs Assessment Highlights

Needs:

- 9th grade “on track” has declined steadily the last 8 years (2016)
- Graduation rates have been stagnant or declined the past 5 years
- Grade 3 reading scores have been relatively stagnant the past 5 years
- Participation and access to advanced courses discrepancy between student groups
- Need a standardized student survey district wide that can be disaggregated

Our Plan

These priorities emerged:

- Equitable outcomes and systems for ALL students
- Social, emotional, and mental health supports
- Rigorous and engaging academics

<https://albany.k12.or.us/district> - Integrated Guidance

Our Plan

Our intended outcomes are:

- **Four-year graduation rate** - ALL students 85% and 87% in 23-24 & 24-25
- **9th grade on track rate** ALL students 81% and 86% in 23-24 & 24-25
- **Student participation in advanced coursework** - 77% and 81% in 23-24 & 24-25
- **Five-year completer rate** ALL students - 95% and 96% in 23-24 & 24-25
- **Grade three reading** - ALL students 65% and 70% in 23-24 & 24-25
- Students report at 75% and 80% in 23-24 & 24-25 for ALL students reporting "I feel like I can be myself at school" and "My teachers care about me".
- Specific goals are also articulated for Students with disabilities, English Learners, and Hispanic/Latino student groups.

Our Plan

These key strategies will help us achieve our intended outcomes:

- Use data to identify disparities in academic outcomes and implement research based education models and systems designed to reduce those disparities for each student
- Use a common set of proven instructional strategies and standards of practice with targeted scaffolds and frequent feedback
- Deliver learning focused on students success in critical thinking, communication, collaboration, conflict resolution, and problem solving in a diverse society

Our Plan

Key Investments:

- Mental health partnerships, counselors, and social workers
- CTE Courses and Teachers
- Interventionists
- MS and Elem Behavior Deans
- Eliminating HS sports/activities participation fees
- MS extracurricular programming
- Additional Investments to support the Strategic Plan

[Link to Integrated Planning and Budget Template on our Website](#)

Longitudinal Performance Growth Targets (LPGTs)

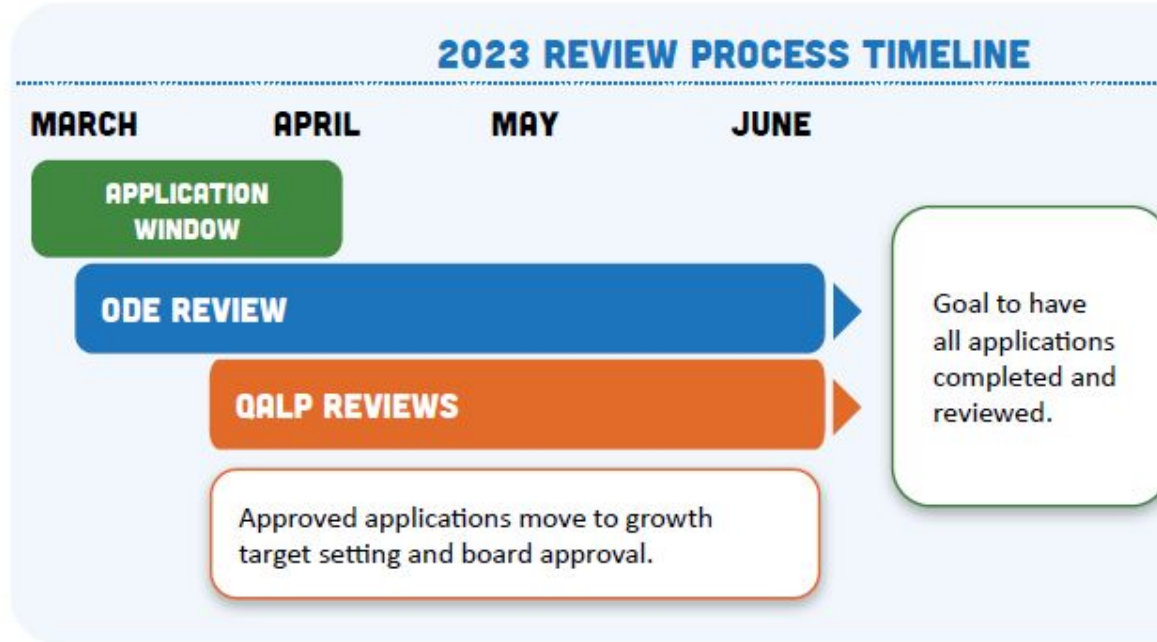
- ODE has asked for draft LPGTs to be submitted with our application
- ODE will then work with us to “co-create” and finalize the LPGTs
- Final LPGTs will be reviewed and approved by the Board in June to complete the grant agreement

- **Third-grade reading proficiency rates measured by ELA**
- **Ninth-grade on-track rates**
- **Regular attendance rates**
- **Four-year or on-time graduation rates**
- **Five-year completion rates**
- Other local metrics may be used to develop applicable performance growth targets.



Referred to as
“5 Common Metrics”

What Happens Next?



Questions & Comments
