

OREGON AT-A-GLANCE DISTRICT PROFILE

Greater Albany Public SD 8J

2021-22

SUPERINTENDENT: Andy Gardner | 718 7th Ave SW, Albany 97321 | 541-967-4501

Students We Serve



8,896

Student Enrollment

DEMOGRAPHICS

American Indian/Alaska Native

Students	1%
Teachers	0%

Asian

Students	1%
Teachers	1%

Black/African American

Students	1%
Teachers	0%

Hispanic/Latino

Students	23%
Teachers	6%

Multiracial

Students	7%
Teachers	2%

Native Hawaiian/Pacific Islander

Students	<1%
Teachers	0%

White

Students	67%
Teachers	91%

14%

Ever English
Learners



28

Languages
Spoken

15%

Students
with
Disabilities

16%

Mobile
Students

45%

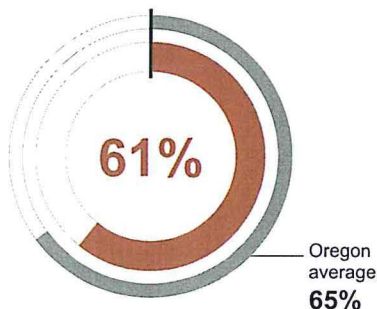
Free/
Reduced
Price Lunch

*<10 students or data unavailable

Start Strong

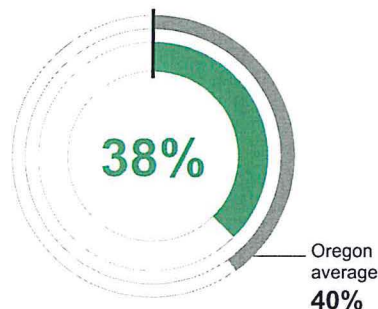
Grades K-2 REGULAR ATTENDERS

Students who attended more than 90% of their enrolled school days.



Grade 3 ENGLISH LANGUAGE ARTS

Students meeting state grade-level expectations.



Academic Progress

Grades 3-8 INDIVIDUAL STUDENT PROGRESS

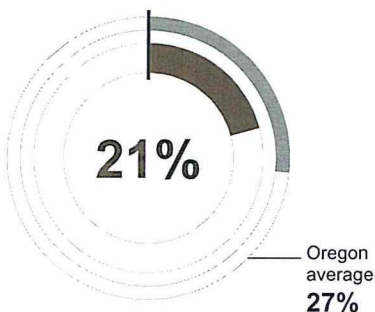
Year-to-year progress in English language arts and mathematics.

Data not available in 2021-22

High School Success

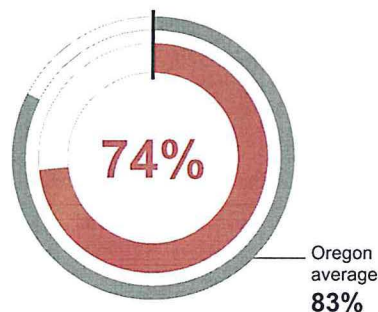
Grade 8 MATHEMATICS

Students meeting state grade-level expectations.



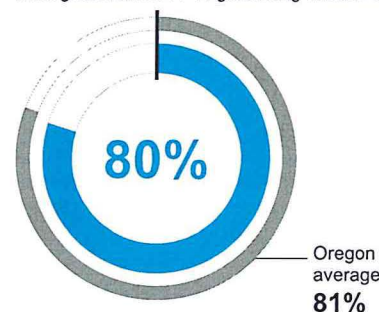
Grade 9 ON-TRACK TO GRADUATE

Students earning one-quarter of graduation credits in their 9th grade year.



Grade 12 ON-TIME GRADUATION

Students earning a diploma within four years. Cohort includes students who were first-time ninth graders in 2017-18 graduating in 2020-21.



District Goals

The Greater Albany Public Schools district is committed to an environment where belonging is the default for all students, and equity is a key principle. We are committed to providing a rigorous, fulfilling education to all students. Our vision and values are:

GAPS is building bridges to lifelong learning and brighter futures.

State Goals

The Oregon Department of Education is partnering with school districts and local communities to ensure a 90% on-time, four year graduation rate by 2025. To progress toward this goal, the state will prioritize efforts to improve attendance, provide a well-rounded education, invest in implementing culturally responsive practices, and promote continuous improvement to close opportunity and achievement gaps for historically and currently underserved students.

OREGON AT-A-GLANCE DISTRICT PROFILE CONTINUED

Greater Albany Public SD 8J

2021-22

Outcomes

Our Staff (rounded FTE)



34

Administrators



504

Teachers



230

Educational assistants



24

Counselors



4

Licensed Librarians



3

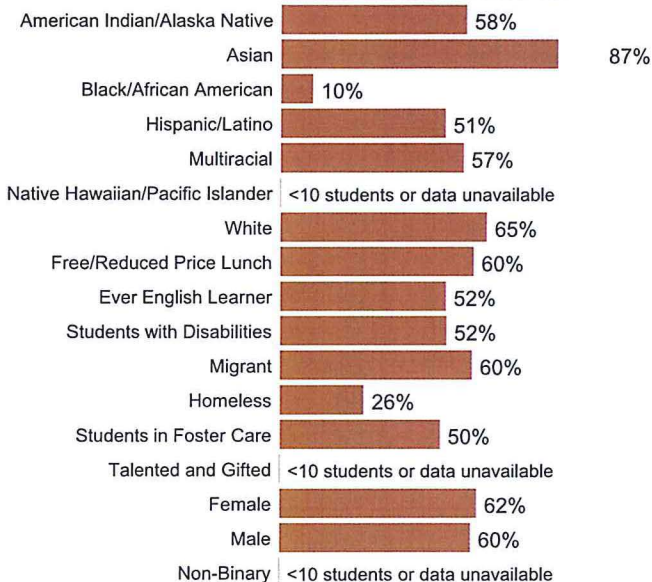
Psychologists



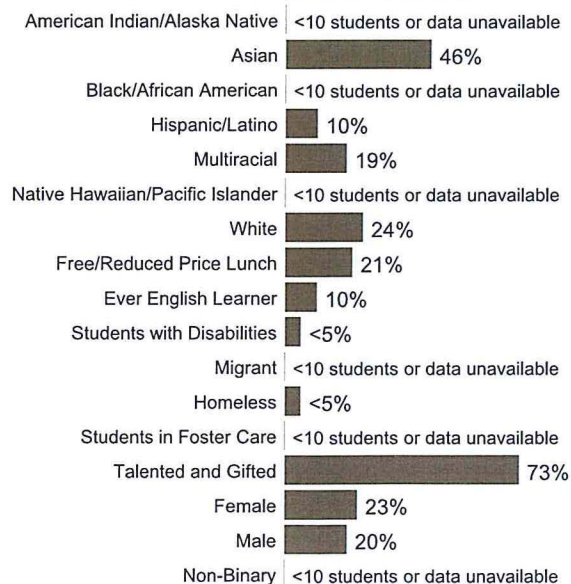
72%

% of licensed teachers with more than 3 years of experience

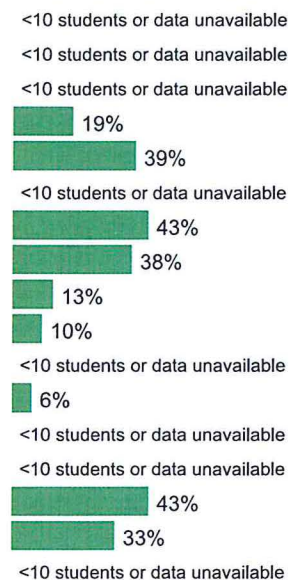
Grades K-2 REGULAR ATTENDERS



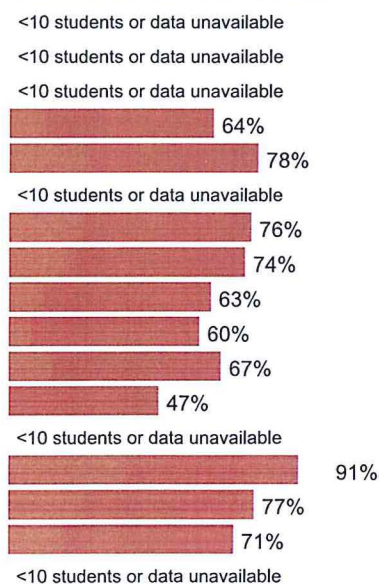
Grade 8 MATHEMATICS



Grade 3 ENGLISH LANGUAGE ARTS



Grade 9 ON-TRACK TO GRADUATE



Grades 3-8 INDIVIDUAL STUDENT PROGRESS

Grade 12 ON-TIME GRADUATION

